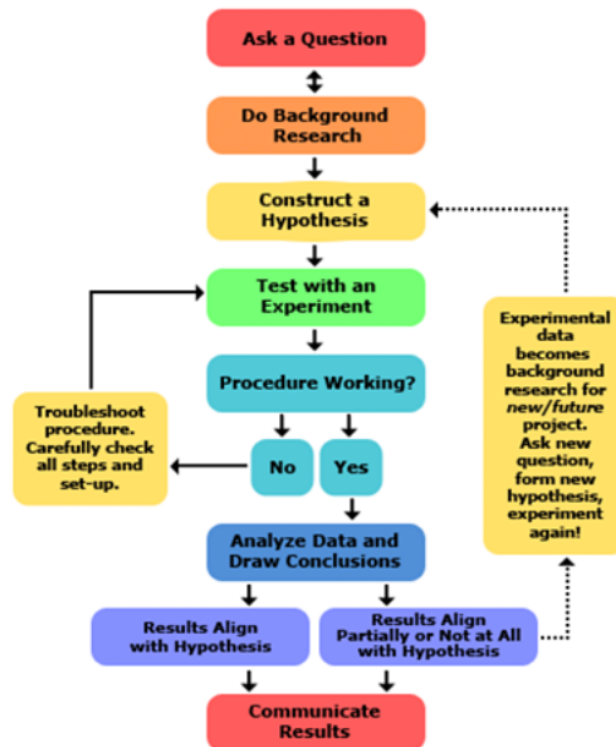


Comparing Scientists' and Engineers' Approach to the Design Process

Scientific Process	Engineering Design Process
Ask a question	Define the problem
Do background research	Do background research
Formulate your hypothesis, identify variables	Specify requirements
Design experiment, establish procedure	Create alternative solutions, choose the best one and develop it
Test your hypothesis by doing an experiment	Build a prototype
Analyze your results and draw conclusions	Test and redesign as necessary
Communicate results	Communicate results

SCIENTIFIC PROCESS



ENGINEERING PROCESS

